



Food and Agriculture  
Organization of the  
United Nations



International  
Plant Protection  
Convention



## How can you tell if your plants have Fusarium TR4?



Yellowing of leaf at the  
base of older leaves.



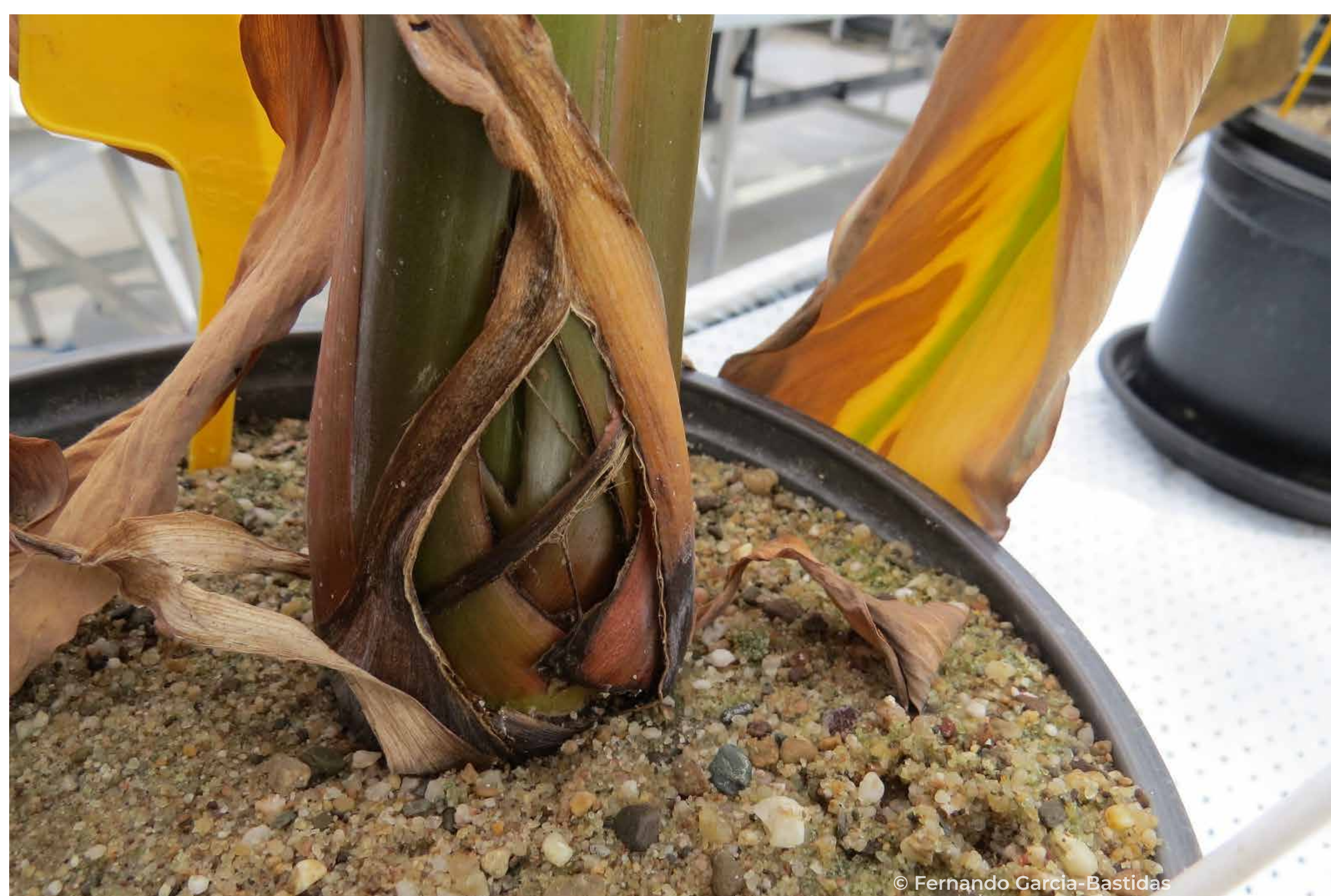
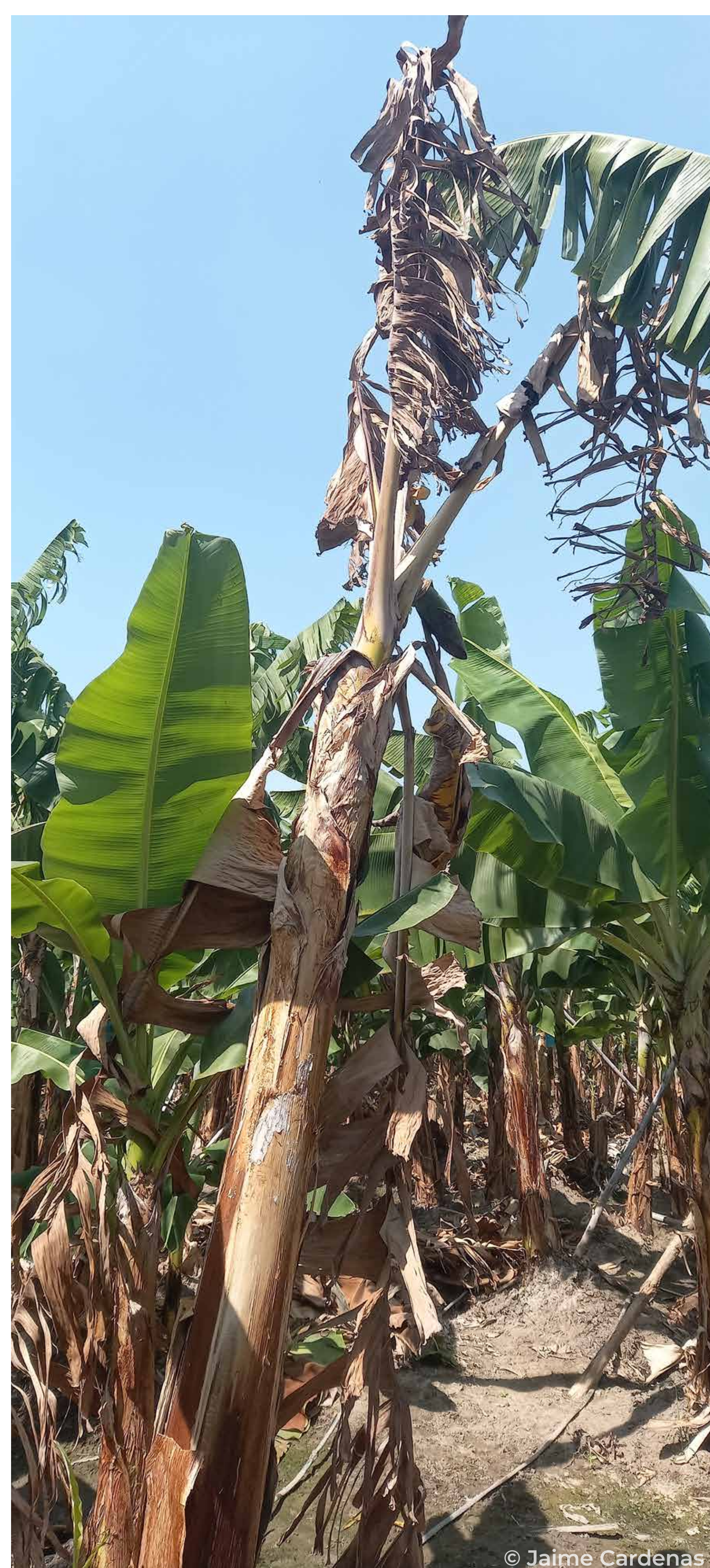
Leaves turning yellow  
and the leaf margins  
turning brown.



Dead leaves collapsing  
and forming a skirt of  
dead leaves around  
the stem of the plant.



Younger leaves can  
remain green  
and upright.



Stem splitting at the  
base of the spine



For more information visit [www.ippc.int](http://www.ippc.int)



**United against  
Fusarium TR4**



Funded by  
the European Union

© FAO - CDOBOSEN